

June
2021

DATA FOR IMPACT

D4IMonitor

In observance of the International Day of the African Child, June 16, Data for Impact (D4I) raises awareness of the work being done to provide a better understanding of the health and well-being challenges faced by children in Africa and their caregivers. D4I works to improve the collection, quality, and use of data related to care for children in adverse circumstances and maternal and child health. The following stories share examples of how D4I is working to address these issues in several African countries.



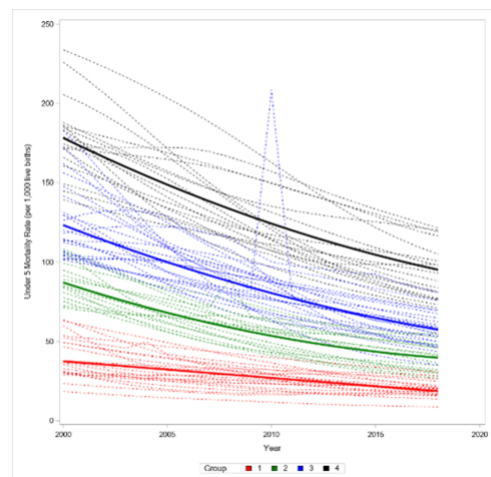
[Using Data to Advance Reform of the Child Care System: Lessons Learned in Uganda](#)

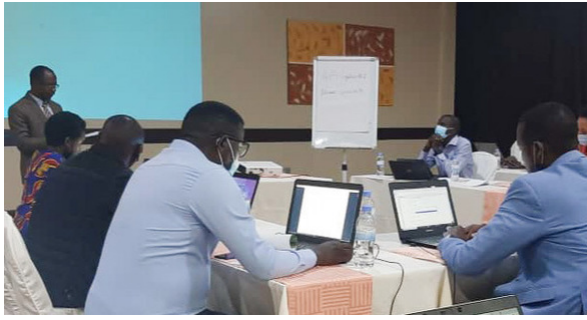
D4I is working with the Ugandan government to strengthen the collection, management, analysis, and use of routine data on alternative care services for children. Along with implementing regular data review meetings, these efforts are helping to inform decision

making and ensure that children without parental care in Uganda can grow up in supportive family environments.

[Using Group-Based Trajectory and Prediction Modeling to Understand Under-Five Mortality](#)

In many low- and middle-income countries (LMICs), child mortality rates remaining unacceptably high despite declines over the past decades. An ongoing D4I study is examining factors that correlate to lower and higher mortality rates among children under age five in 78 LMICs, including more than 40 countries in Africa. Use of group-based trajectory and prediction modeling is helping researchers view trends over time and identify factors that can lead to declines in under-five mortality.





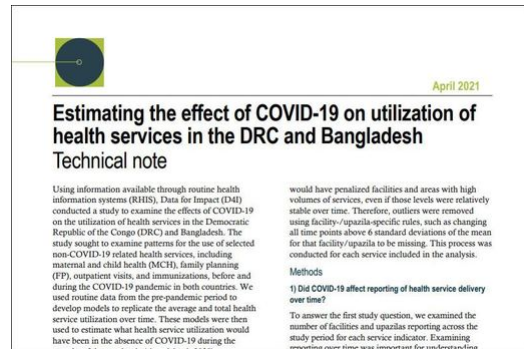
Promote Appropriate Care for Children

Rwanda's care system reform is helping ensure that children without parental care receive appropriate care. To aid these efforts, D4I is working in Rwanda to address the need for relevant high-quality data to help the

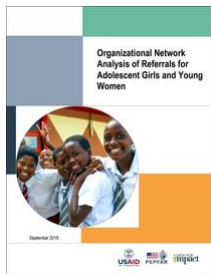
country target interventions to improve child protection and care for the most vulnerable children and their families.

Study on COVID-19's Effects on Child Health Service Utilization and More

A recent study conducted in the Democratic Republic of the Congo assessed the effects of the COVID-19 pandemic on use of health services, including child health services. The study used pre-pandemic data to create models of expected service use and then compared those models to actual utilization. This technical note shares overall findings from the study in DRC and Bangladesh.



Spotlight on Resources



- [Can a Quality Improvement Project Impact Maternal and Child Health Outcomes at Scale in Northern Ghana?](#)
- [Organizational Network Analysis of Referrals for Adolescent Girls and Young Women](#)
- [Family Planning and Reproductive Health Indicators Database: Newborn Health](#)
- [Family Planning and Reproductive Health Indicators Database: Adolescent and Youth Sexual and Reproductive Health](#)



This email was produced with the support of the United States Agency for International Development (USAID) under the terms of the Data for Impact (D4I) associate award 7200AA18LA00008, which is implemented by the Carolina Population Center at the University of North Carolina at Chapel Hill, in partnership with Palladium International, LLC; ICF Macro, Inc.; John Snow, Inc.; and Tulane University. The views expressed do not necessarily reflect the views of USAID or the United States government.

Share this email:



Manage your preferences | **Opt out** using TrueRemove®

Got this as a forward? **Sign up** to receive our future emails.

View this email **online**.

University of North Carolina at Chapel Hill CB 8120
Chapel Hill, NC | 27599 US

This email was sent to .

To continue receiving our emails, add us to your address book.

